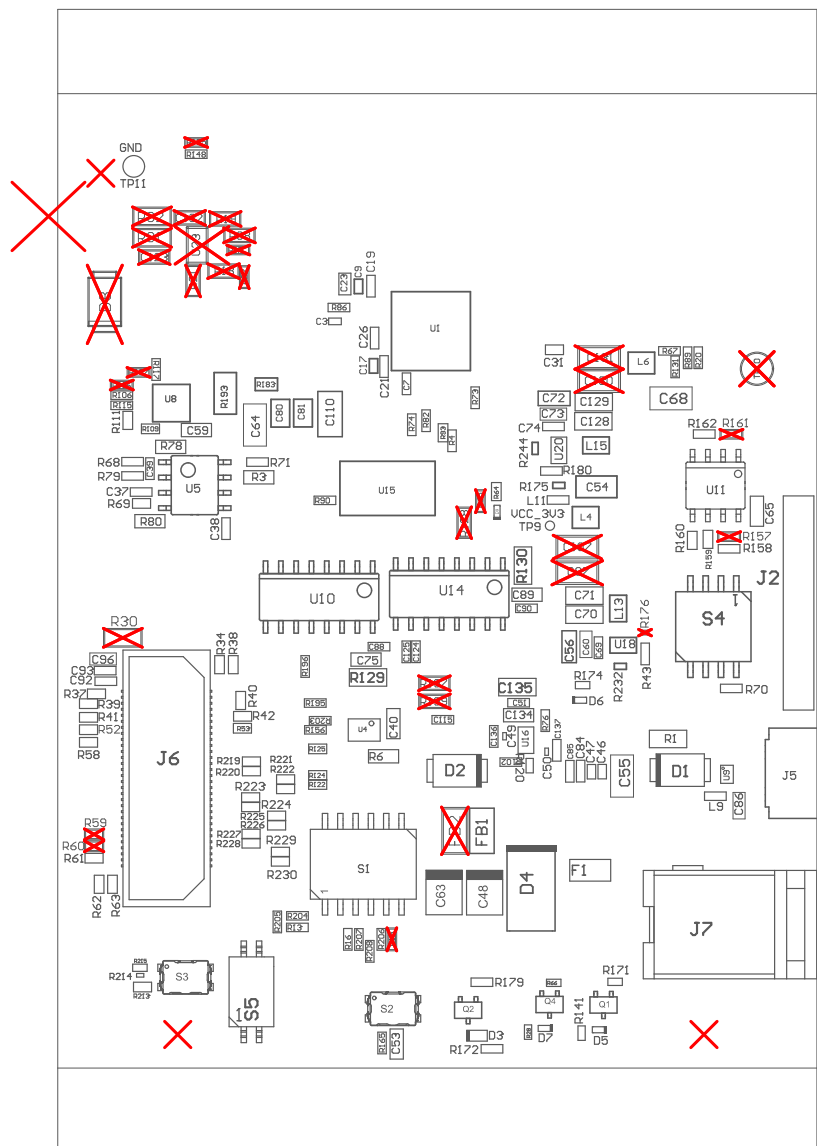
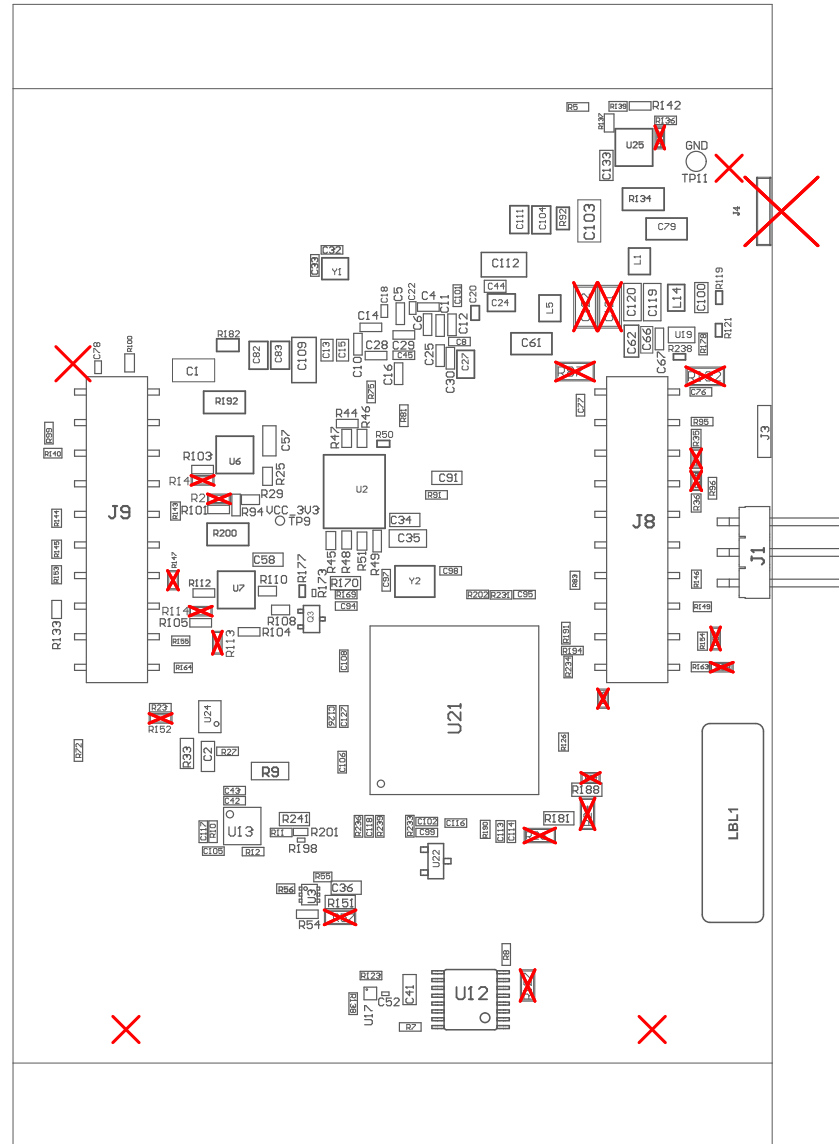


ZZ5 ■ INDICATION FOR COMPONENTS D* ARE GIVEN AT THEIR CATHODE SIDE.

ASSEMBLY VARIANT: 001_IWR



PCB VIEWED FROM TOP SIDE	BOARD #: PROC117	REV: B	SUN REV: 1460 [Modified]
Assembly Layer Top	TID #: N/A		
PLOT NAME = Top Assembly Drawing	GENERATED : 20-07-2023 12:05:07		TEXAS INSTRUMENTS



COMPONENTS MARKED 'DNP' SHOULD NOT BE POPULATED.
 ASSEMBLY VARIANT: 001_IWR

PCB VIEWED FROM BOTTOM SIDE	BOARD #: PROC117	REV: B	SUN REV: 1460 [Modified]
Assembly Bottom Layer	TID #: N/A		
PLOT NAME = Bottom Assembly Drawing	GENERATED : 20-07-2023 12:05:07	TEXAS INSTRUMENTS	